



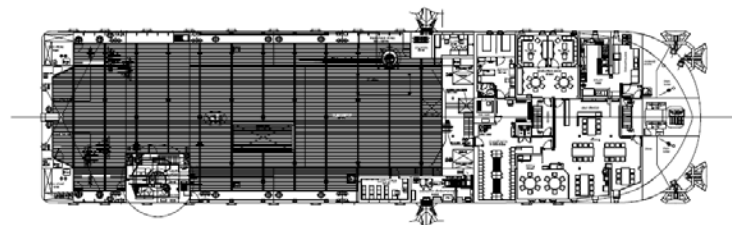
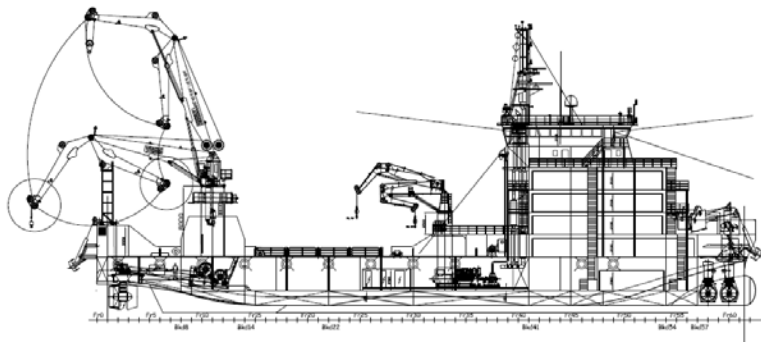
# BOURBON ENTERPRISE DP 2 - 8 POINTS MOORING



BOURBON ENTERPRISE is a Socarenam design multipurpose subsea services support vessel, diesel electric, DP 2, equipped with an 8 points mooring system, one AHC deep water crane and accommodation for 103 persons.

The vessel is designed for world-wide, deep water operations to fulfill the following duties:

- Windfarm support;
- Deepwater precision lifting and installation up to 1,500m;
- ROV operations;
- Maintenance of SPMs buoys;
- Survey operations;
- Platform maintenance support in DP;
- Transportation of liquid products, deck cargo and other equipment for drilling and production support;
- Flotel support.



MULTI PURPOSE SUPPLY VESSEL

## REGISTRATION

Vessel Name: **BOURBON ENTERPRISE**

Flag: **Luxembourg**

Class: **BV I ✕ HULL ✕ MACH**

**Special Service / Offshore Support; Fire fighting ship / Fire fighting 1 Waterspray  
Unrestricted navigation**

**✕ AUT-UMS; ✕ ALM; ✕ DYNAPOS-AM/AT-R; COMF - NOISE 3**

Builder: **SOCARENAM**

Year Built: **2009**

Updated: 06-08-2012



# TECHNICAL SPECIFICATIONS

## MPSV - BOURBON ENTERPRISE



### MAIN PARTICULARS

#### DIMENSIONS

Length between PP: .....	70.33 m
Breadth moulded: .....	19.50 m
Depth: .....	5.50 m
Draft (Min / Max): .....	3.83 m / 5.50 m
Deadweight at max. draft: .....	1,862 t
Gross tonnage: .....	3,052 UMS
Moonpool: .....	NA
Helideck (Diam/Tonnage): .....	NA

#### CAPACITIES & DELIVERY RATES

Deck area: .....	720 m <sup>2</sup> @ 10 t/m <sup>2</sup> (aft) & 5 t/m <sup>2</sup> (fwd)
Mezzanine deck area: .....	NA
Deck cargo (transit - operations): .....	1,176 t @ 1 m above deck
Fuel oil (capacity - transfer): .....	600 m <sup>3</sup> - 80 m <sup>3</sup> /h @ 9 bars
Drill or Water ballast (capacity - transfer): .....	1,290 m <sup>3</sup> - 150 m <sup>3</sup> /h @ 10 bars
Antiroll passive tanks: .....	NA
Antiheeling (capacity - transfer): .....	NA
Fresh water (capacity - transfer): .....	779 m <sup>3</sup> - 30 m <sup>3</sup> /h @ 9 bars
Mud / Brine (capacity - transfer): .....	200 m <sup>3</sup> / 400 m <sup>3</sup> - 2 x 80 m <sup>3</sup> /h @ 9 bars
Methanol (capacity - transfer): .....	NA
Dry bulk (capacity - transfer): .....	NA
Other: .....	NA
Oil recovery: .....	NA
Dispersant: .....	NA
Foam: .....	8.6 m <sup>3</sup>

#### ACCOMMODATIONS

Accommodations for: .....	103 persons
Single cabins: .....	9
2 man cabins: .....	35
3 men cabins: .....	NA
4 men cabins: .....	6
6 men cabins: .....	NA
Offices: .....	4
Hospital: .....	1
Mess / Day rooms: .....	2 Mess / 2 Day rooms
Laundry: .....	1
Galley: .....	1
Workshop: .....	1
Other: .....	1 Conference room, 1 Gym
Air conditioning: .....	YES
Water maker: .....	NA

### MACHINERY & PERFORMANCE

#### PROPULSION - MACHINERY

Main propulsion: .....	2 x 1,300 kW FP Azimuth thrusters
Bow thrusters: .....	2 x 700 kW CP Tunnel
Bow thruster retractable: .....	NA
Main generator: .....	5 x 910 kW - 460 V
Auxiliary generator: .....	NA
Emergency generator: .....	1 x 80 kW - 460 V

#### SPEED & CONSUMPTION (Information only)

Maximum speed (100%) lighth vessel: .....	11 knots - 14 t/day
Service speed (80%) medium loaded: .....	10 knots - 11 t/day
Stand-by at port: .....	2 t/day
Stand-by on DP: .....	4 t/day

### EQUIPMENT & ELECTRONICS

#### DECK EQUIPMENT

Tuggers: .....	1 x 10 t
Capstans: .....	2 x 5 t
Deck service air supply: .....	1,200 m <sup>3</sup> /h @ 8 bars
Deck power supply: .....	2 x 300 kW - 460 V
Work boat: .....	1 MSI Marine
Deck provision crane: .....	10 t @ 10 m
Mooring: .....	4 x 40 t
Offshore crane 1: .....	SMST knuckle boom
Harbour capacity: .....	DAF 1.3 - 40 t @ 9 m - 15 t @ 21.5 m
Offshore capacity: .....	DAF 1.6 - 30 t @ 9 m - 11 t @ 21.5 m
Main winch: .....	40 t / 17 t - 1,500 m - AHC - Man Riding
Auxiliary winch: .....	NA
Offshore crane 2: .....	NA
Harbour capacity: .....	NA
Offshore capacity: .....	NA
Main winch: .....	NA
Auxiliary winch: .....	NA

#### COMMUNICATION

Inmarsat: .....	2 x SatC
VSAT: .....	1 x Ku band 128 Kbit
Video network: .....	YES
Telephone in all cabins: .....	NO - only intercom
Video in all cabins: .....	NO

#### DYNAMIC POSITIONING

Maker: .....	SIREHNA EASY DP200
Type: .....	DP 2
Reference 1: .....	DGPS 1 SAAB R4
Reference 2: .....	DGPS 2 SAAB R4
Reference 3: .....	Cyscan Laser Reference system
Reference 4: .....	Sonardyne Ranger Pro USBL
Reference 5: .....	NA

#### SAFETY EQUIPMENT

Fi-Fi: .....	Class 1
Pumps: .....	2 x 1,800 m <sup>3</sup> /h
Monitors: .....	1 x 1,200 m <sup>3</sup> /h
Fast Rescue Craft: .....	NA
Rescue capacity: .....	NA

*All particulars believed to be correct but not guaranteed*

**Bourbon Offshore** - 148, rue Sainte - 13007 Marseille - France

Telephone: (+33) 04 91 13 08 00 - Internet: [www.bourbon-online.com](http://www.bourbon-online.com) - E-mail: [bourbon-offshore@bourbon-online.com](mailto:bourbon-offshore@bourbon-online.com)